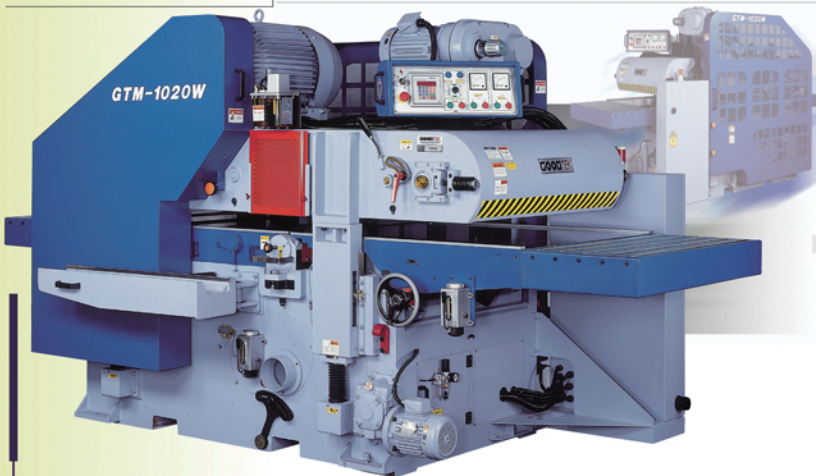


GTM-1020W

Maximum Cutting Width up to 1,020 mm.

Heavy Duty Machining! Ruggedly Constructed Throughout!



Helical Cutterhead Rest
The helical cutterhead can be conveniently pulled out and provides convenient knife bit replacement.



Convenient and Accurate Front Table Adjustment

• The front table elevation is easily adjusted by turning a big handwheel combined with the worm gear mechanism.
• A mechanical meter is provided on the handwheel for accurately indicating the bottom cut thickness adjustment.



Powerful Transmission System

The feed rollers and table rollers are driven by the specially-designed double-chain drive. This greatly upgrades feeding power and smoothness.



Rear Cutting Mechanism
There are two feed rollers and two table rollers provided at the infeed and outfeed ends of the top cutterhead. All rollers are powered to assure more powerful and more stable feeding performance.



Mild Pressure Spikes

The pressure spikes are in an overlapped layout with a minimum of gaps and so hold the workpiece firmly and uniformly. The special mild hold-down design ensures shake free feeding even for narrow workpieces.



High Quality Electronic Components

The electrical control system consists of high quality components which meet European standards. The control circuit is neatly arranged for convenient maintenance.



Pneumatically Operated Disk Brake
The top and bottom cutterheads are equipped with pneumatically operated disk brakes which provide instant stop of cutterhead running. This ensures safety protection for the machine and the operator.



Slideway Stabilizing Cylinders

Each side of the upper mechanism elevation slideway is equipped with an individual stabilizing air cylinder. These two cylinders not only increase the stability of cutting but also ensure superior planing quality.

- Maximum cut width up to 1,020 mm.
- 40 (50) HP top cutterhead drive.
- 30 (40) HP bottom cutterhead drive.
- Table surface is hard chrome plated and precision ground thereby assuring smooth feeding motion and maximum wear resistance.
- Sectional infeed roller.
- Equipped with mechanical overload warning lamp.
- The table is equipped with four powered rollers.
- Powered elevation of upper mechanism.

SPECIFICATIONS:

MODEL	GTM-1020W
Maximum width of plane	1020mm (40')
Maximum height of plane	200mm (8")
Minimum thickness of plane	10mm
Minimum length of plane	310mm
Number of knives	328pcs (x2)
Knife size	TCT15x15x2.5mm
Cutterhead diameter	φ131mm
Cutterhead speed	4000rpm
RPM of stepless variable speed	7-20m/min
Dust hood outlet	6" x 4
Table surface	40"x103"
Top cutterhead drive motor	40 (50HP)
Bottom cutterhead drive motor	30 (40HP)
Feed drive motor	7.5HP
Table elevation motor	1HP
Machine dimensions (LxWxH)	2750x1950x1900mm
Net weight	6300kg
Packing dimensions (LxWxH)	2850x2050x2050mm
Gross weight	7000kg

* All specifications, dimensions and design characteristics shown in this catalog are subject to change without notice.



Swiveling Control Panel

The specially-designed swiveling control panel allows operator to use the machine conveniently in any position.



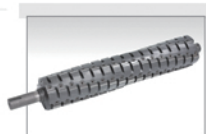
Infeed and Outfeed Extension Roller

There are five rollers provided at the infeed and outfeed end of table. They provide firm support, especially for long workpieces.



Helical Cutterhead (Basic Type)

- The helical cutterhead is precision machined.
- The cutterhead provides extremely smooth and quiet cutting.
- Choice for 15 x 15 x 2.5 mm. TCT knife bits.



Helical Cutterhead (Heavy-duty Type)

- The helical cutterhead is precision machined.
- The cutterhead provides extremely smooth and quiet cutting.
- Equipped with 30 x 12 x 1.5 mm. TCT knife bits. (OPTIONAL)